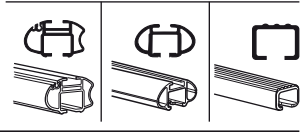
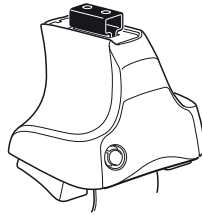


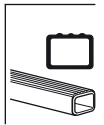
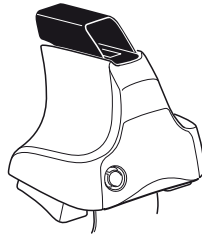
Kit 1041

TOYOTA Starlet, 3-dr Hatchback, 96-99

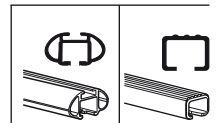
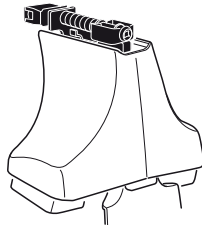
480R
754



480



750



xx kg
 xx lbs + 7 kg / 15,4 lbs = **Max. 50 kg**
 3 kg / 6,6 lbs = **Max. 110 lbs**

80 km/h 50 Mph 130 km/h 80 Mph
 40 km/h 25 Mph
km/h Mph

THULE + **Kit XXXX**

instructions

x1 x4 x4 x4

480R/754

x1 x4 x4 x4

480

x1 x4 x4

750

x2	x2	x2	x2	x2
x2		x2	x2	
x2		x2	x2	
x4		x4		
		x4		

107 x4

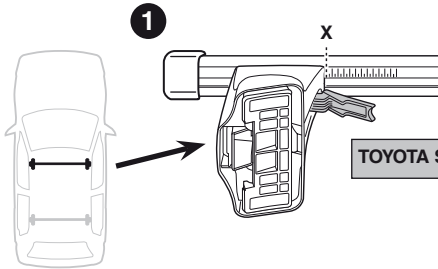
06 x2

15 x2

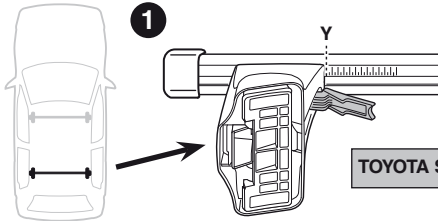
FR **FR**
FL **RL** x1

Kit

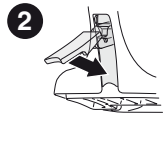
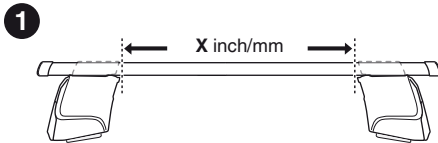
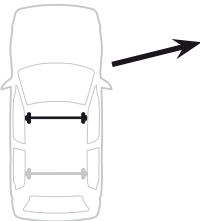
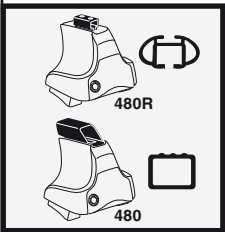




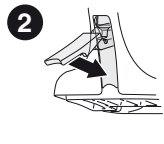
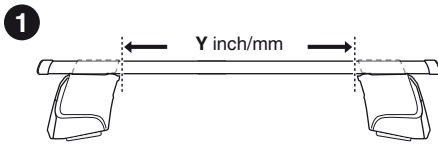
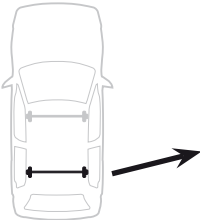
	X
TOYOTA Starlet, 3-dr Hatchback, 96-99	25,5



	Y
TOYOTA Starlet, 3-dr Hatchback, 96-99	22



	X inch	X mm
TOYOTA Starlet, 3-dr Hatchback, 96-99	35 5/8"	906 mm

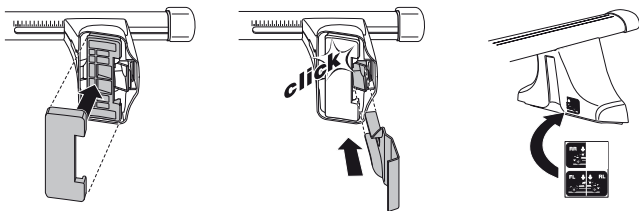
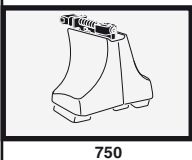
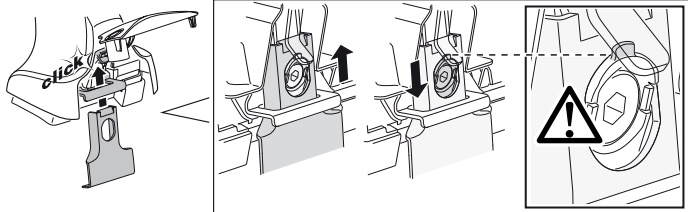
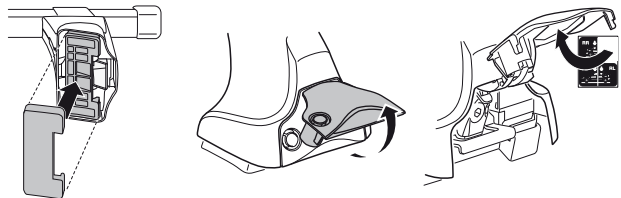
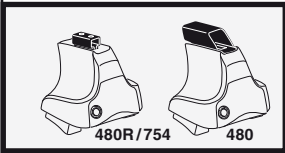
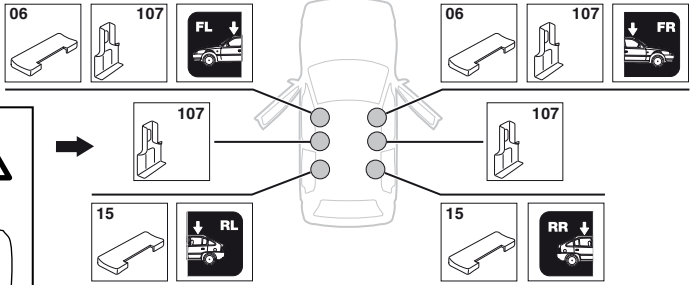
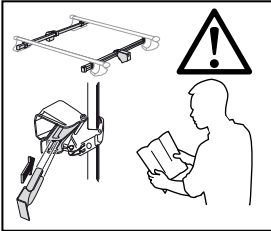


	Y inch	Y mm
TOYOTA Starlet, 3-dr Hatchback, 96-99	34 1/4"	871 mm

4

TOYOTA Starlet, 3-dr Hatchback, 96-99

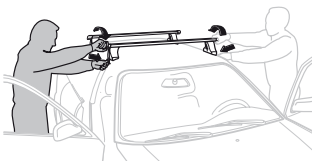
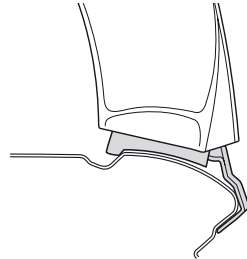
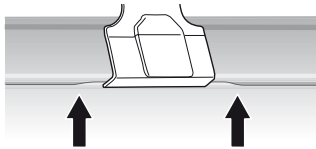
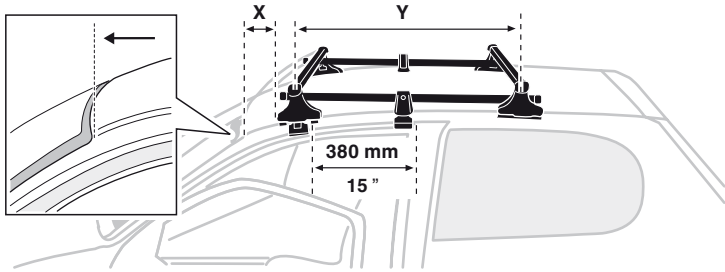
SRA



5



	X mm	Y mm	X inch	Y inch
TOYOTA Starlet, 3-dr Hatchback, 96-99	180 mm	700 mm	7 1/8"	27 1/2"



- | | | | |
|--------------|---|------------|---|
| GB/US | Tighten alternately | CZ | Pokręťta bagazníka dokřećaj dokřećaj napřezmiennie. |
| D | Die Schrauben abwechselnd anziehen | SK | Dofahujte striedavo |
| F | Serrer alternativement chaque cōté | SLO | Privijajte izmenično. |
| NL | Afwisselend aan de linker- en de rechterkant aandraaien | HR | Naizmjenično zategnite |
| I | Alternare il serraggio delle viti | HU | Egymástól függetlenül szorítandó |
| E | Apretar alternativamente | GR | Σφιγγετε εναλλάξ |
| PT | Aperte alternadamente | TR | Dönüşümlü sıkın |
| S | Dra åt växelvis | 中文 | 交替拧紧 |
| FIN | Kierrä vuorotellen | 한국어 | 번갈아 가며 조이십시오. |
| EST | Pinguldage vaheldumisi | 日本語 | 交互に締め付けてください。 |
| LAT | Pievelciet pamīšus | ไทย | ขันในแบบสลับ |
| LIT | Užsukinėkite pakaitomis | | |
| PL | Śruby dokręćaj naprzemiennie | | |
| RU | Затягивайте попеременно | | |

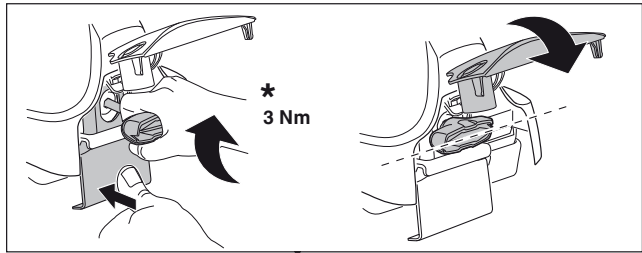
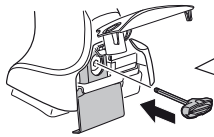
6



480R/754



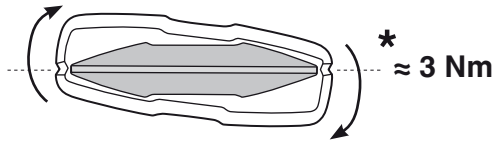
480



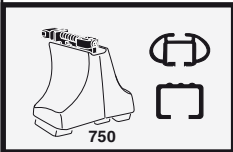
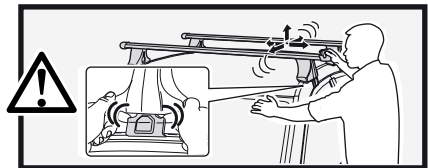
*
3 Nm



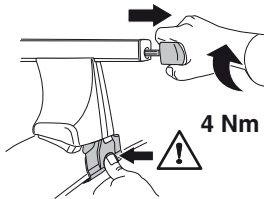
*



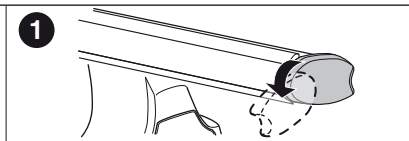
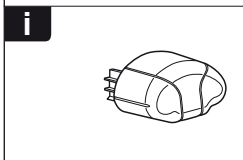
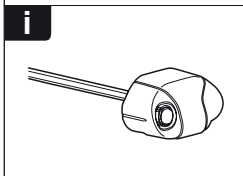
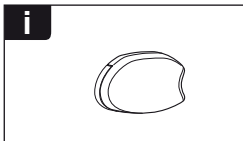
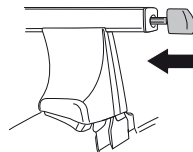
*
≈ 3 Nm



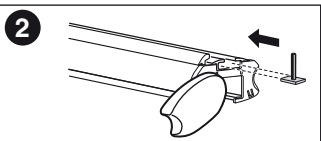
750



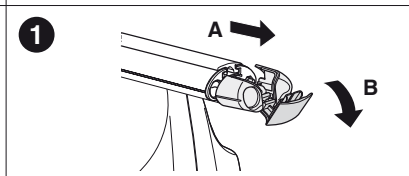
4 Nm



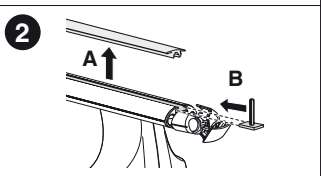
1



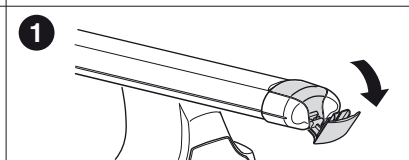
2



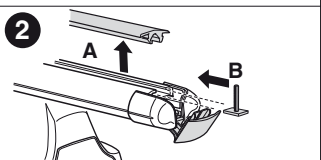
1



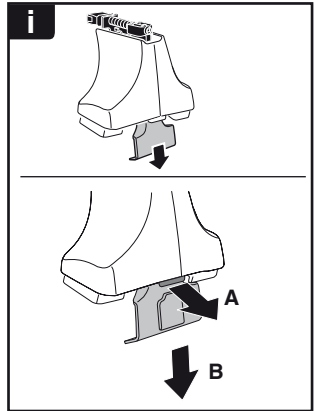
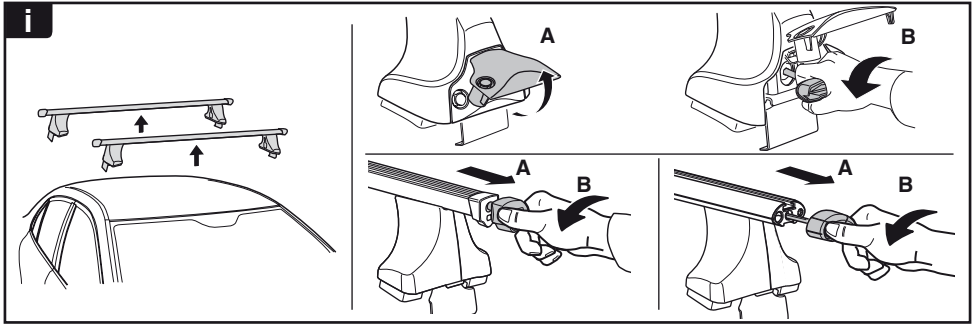
2



1



2



THULE
SWEDEN
**ONE
KEY
SYSTEM**



- 544 (x4)
- 596 (x6)
- 588 (x8)
- NA 510 (x10)
- EUR 452 (x12)
- ASIA



WW ▶ Thule Sweden AB, Box 69, 330 33 Hillerstorp, SWEDEN
NA ▶ Thule Inc., 42 Silvermine Road, Seymour, Connecticut 06483, USA

info@thule.com
customer.service@thule.com

www.thule.com